

Analysis of data taken from the GTCW Register of Qualified Teachers

Comparison of teachers working in Welsh medium and English medium primary & secondary schools

Key Findings

- 75% of teachers in both Welsh and English medium schools are female, which largely mirrors the profile of all registered teachers in Wales.
- in the primary phase, the percentage of teachers under the age of 40 is higher in Welsh medium schools (55.8% as compared to 48.4% in English medium schools). This difference is not apparent in the secondary phase;
- as expected, there are differences between Welsh and English medium schools in where teachers undertook their initial teacher training, depending on the extent of Welsh language delivery at particular institutions;
- there are variations between Welsh and English medium schools in the percentage of teachers trained in the secondary subjects they teach. However, there does not appear to be any obvious pattern to these differences;
- the percentage of female headteachers in Welsh medium primary schools (64.3%) is slightly higher than that in English medium primary schools (60.3%). While, in the secondary phase, the converse is true;
- headteachers in Welsh medium primary schools are younger than those in English medium primary schools with 38.6% being under 45 years of age compared to 28.1% in English medium schools. In the secondary phase, it is notable that 36.5% of headteachers in English medium schools are aged 55 and over compared to 24.1% in Welsh medium schools;
- In English medium schools, a larger percentage of heads and deputies hold NPQH compared to those in Welsh medium schools. This pattern is evident in both the primary and secondary phases;

Notes

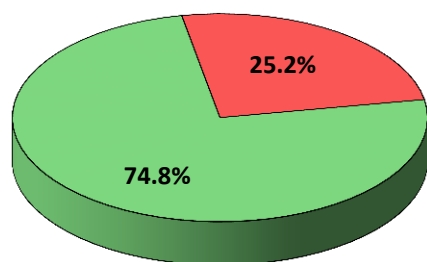
- the data used for these report was taken from the Register of Qualified Teachers on the 1st March 2013.
- only those registered teachers working in a primary or secondary school are included in this report and the data relates to the first current employment held on a teacher's record regardless of whether they are employed by more than one employer.
- registered teacher numbers are displayed as 'actuals' rather than 'full-time equivalents'.
- the split of 'Welsh Medium' or 'English Medium' schools are as defined from the Welsh Government's address list of schools in Wales.
- no subject taught data is held for headteachers and therefore registered headteachers in secondary schools are not included in table 7.

In considering the data relating to headteachers also note

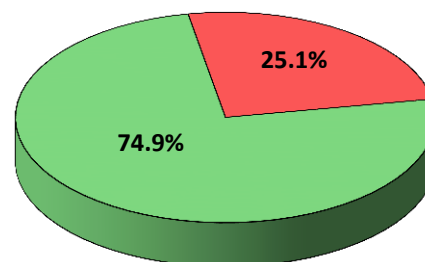
- headteachers are increasingly in charge of a cluster of schools.
- some schools are open on Welsh Government records but are may not be staffed as they are either pending closure or have recently opened.
- some schools have vacant posts with no acting headteacher or are so small in size no headteacher has been appointed.

1. Number of registered teachers by gender and school type

	Primary						Secondary						Total	%
	Welsh Medium	%	English Medium	%	Primary Total	%	Welsh Medium	%	English Medium	%	Secondary Total	%		
Female	2,552	84.3	9,056	84.6	11,608	84.6	1,850	64.8	6,489	64.6	8,339	64.6	19,947	74.9
Male	474	15.7	1,644	15.4	2,118	15.4	1,007	35.2	3,558	35.4	4,565	35.4	6,683	25.1
Total	3,026	100	10,700	100	13,726	100	2,857	100	10,047	100	12,904	100	26,630	100

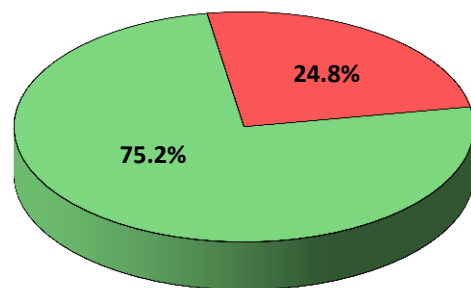


■ Welsh Medium Schools Female
■ Welsh Medium Schools Male



■ English Medium Schools Female
■ English Medium Schools Male

All Registered Teachers - March 2013

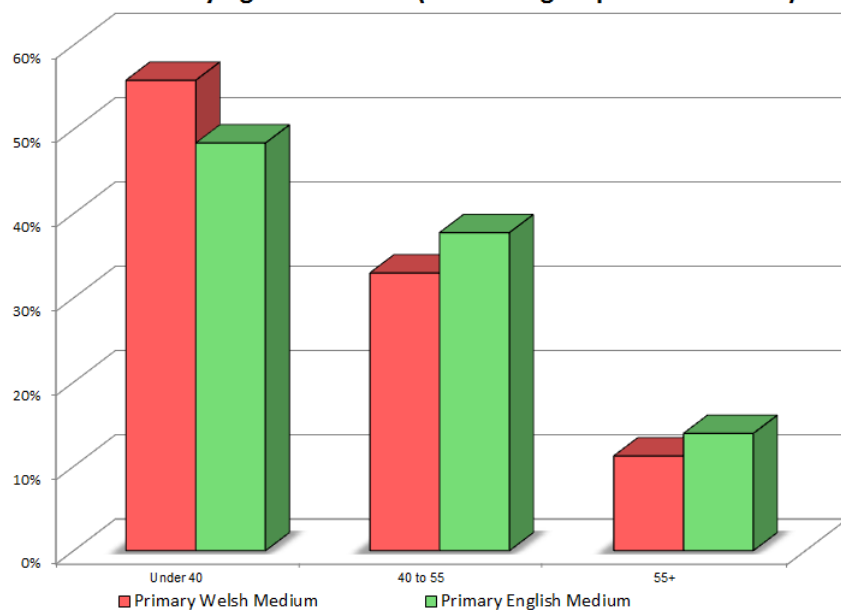


■ Female
■ Male

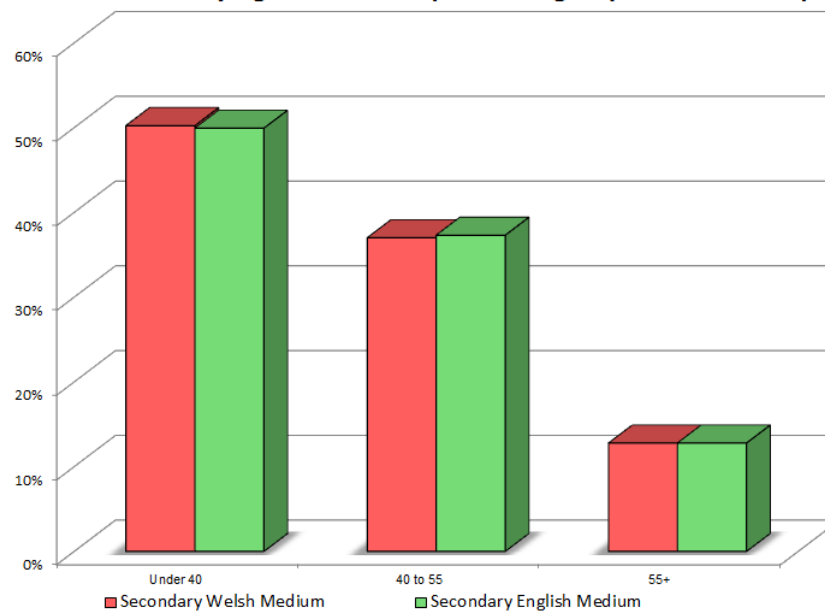
2. Number of registered teachers by age and school type

	Primary						Secondary						Average Age Range	%
	Primary Welsh Medium	%	Primary English Medium	%	Primary Total	%	Secondary Welsh Medium	%	Secondary English Medium	%	Secondary Total	%		
Under 25	184	6.1	346	3.2	530	3.9	118	4.1	318	3.2	436	3.4	966	3.6
25 to 29	497	16.4	1,378	12.9	1,875	13.7	416	14.6	1,311	13.0	1,727	13.4	3,602	13.5
30 to 34	503	16.6	1,715	16.0	2,218	16.2	447	15.6	1,782	17.7	2,229	17.3	4,447	16.7
35 to 39	505	16.7	1,736	16.2	2,241	16.3	454	15.9	1,605	16.0	2,059	16.0	4,300	16.1
Under 40	1,689	55.8	5,175	48.4	6,864	50.0	1,435	50.2	5,016	49.9	6,451	50.0	13,315	50.0
40 to 44	419	13.8	1,707	16.0	2,126	15.5	412	14.4	1,460	14.5	1,872	14.5	3,998	15.0
45 to 49	317	10.5	1,314	12.3	1,631	11.9	307	10.7	1,146	11.4	1,453	11.3	3,084	11.6
50 to 54	261	8.6	1,016	9.5	1,277	9.3	338	11.8	1,141	11.4	1,479	11.5	2,756	10.3
40 to 55	997	32.9	4,037	37.7	5,034	36.7	1,057	37.0	3,747	37.3	4,804	37.2	9,838	36.9
55 to 59	279	9.2	1,157	10.8	1,436	10.5	290	10.2	1,000	10.0	1,290	10.0	2,726	10.2
60 to 64	54	1.8	303	2.8	357	2.6	69	2.4	258	2.6	327	2.5	684	2.6
65 +	7	0.2	28	0.3	35	0.3	6	0.2	26	0.3	32	0.2	67	0.3
55+	340	11.2	1,488	13.9	1,828	13.3	365	12.8	1,284	12.8	1,649	12.8	3,477	13.1
Total	3,026	100	10,700	100	13,726	100	2,857	100	10,047	100	12,904	100	26,630	100

Primary Age Breakdown (based on groups shown above)



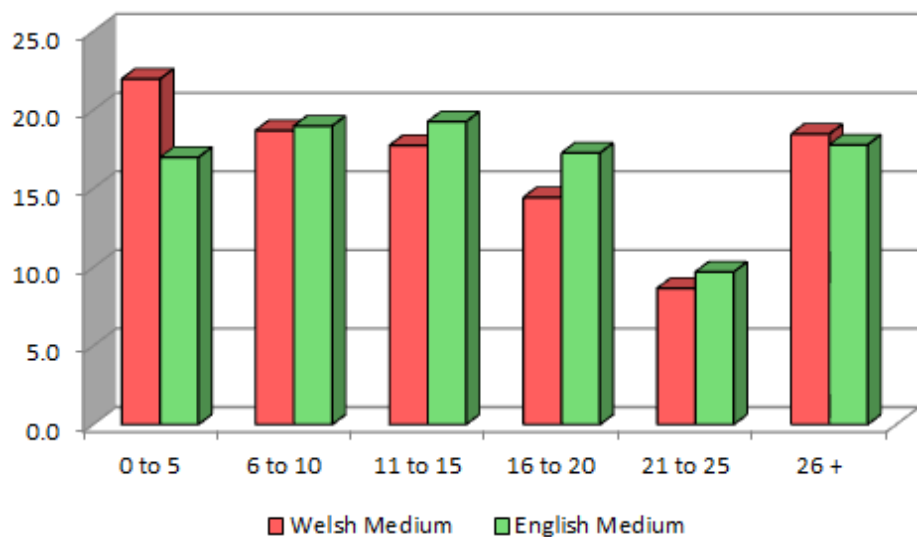
Secondary Age Breakdown (based on groups shown above)



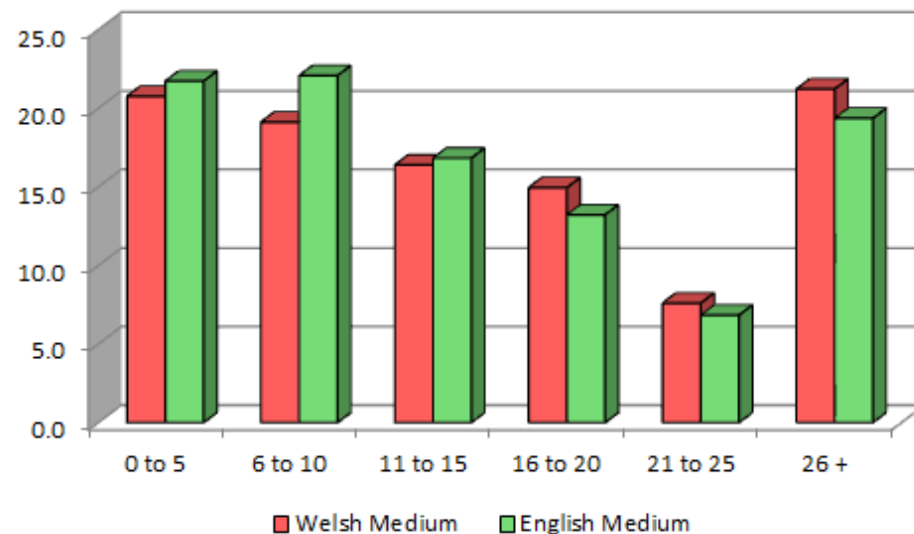
3. Number of registered teachers by number of years since QTS and school type

	Primary						Secondary						Total	%
	Welsh Medium	%	English Medium	%	Primary Total	%	Welsh Medium	%	English Medium	%	Secondary Total	%		
0 to 5	665	22.0	1,818	17.0	2,483	18.1	593	20.8	2,182	21.7	2,775	21.5	5,258	19.7
6 to 10	566	18.7	2,032	19.0	2,598	18.9	546	19.1	2,217	22.1	2,763	21.4	5,361	20.1
11 to 15	537	17.7	2,061	19.3	2,598	18.9	468	16.4	1,690	16.8	2,158	16.7	4,756	17.9
16 to 20	437	14.4	1,848	17.3	2,285	16.6	427	14.9	1,328	13.2	1,755	13.6	4,040	15.2
21 to 25	262	8.7	1,038	9.7	1,299	9.5	217	7.6	686	6.8	903	7.0	2,202	8.3
26 +	559	18.5	1,904	17.8	2,463	17.9	606	21.2	1,944	19.3	2,550	19.8	5,013	18.8
Total	3,026	100	10,700	100	13,726	100	2,857	100	10,047	100	12,904	100	26,630	100

Years since QTS Primary Sector



Years since QTS Secondary Sector



4. Number of registered teachers who have made a declaration regarding their disability in accordance with the Equality Act 2010 and school type

	Primary						Secondary						Total	%
	Welsh Medium	%	English Medium	%	Primary Total	%	Welsh Medium	%	English Medium	%	Secondary Total	%		
Yes	3	0.1	16	0.1	19	0.1	3	0.1	25	0.2	28	0.2	47	0.2
No	3,023	99.9	10,684	99.9	13,707	99.9	2,854	99.9	10,022	99.8	12,876	99.8	26,583	99.8
Total	3,026	100	10,700	100	13,726	100	2,857	100	10,047	100	12,904	100	26,630	100

5. Number of registered teachers by Ethnic Group and school type

	Primary						Secondary						Total	%
	Welsh Medium	%	English Medium	%	Primary Total	%	Welsh Medium	%	English Medium	%	Secondary Total	%		
White: British	2611	86.3	8978	83.9	11589	84.4	2380	83.3	8067	80.3	10447	81.0	22036	82.7
White: Any Other White Background	21	0.7	90	0.8	111	0.8	48	1.7	207	2.1	255	2.0	366	1.4
I do not wish my ethnic group to be recorded in any way	34	1.1	119	1.1	153	1.1	58	2.0	135	1.3	193	1.5	346	1.3
Mixed: Any other mixed background	5	0.2	20	0.2	25	0.2	2	0.1	9	0.1	11	0.1	36	0.1
Mixed: White And Asian	0	0.0	15	0.1	15	0.1	0	0.0	18	0.2	18	0.1	33	0.1
Any Other Ethnic Group	2	0.1	8	0.1	10	0.1	2	0.1	13	0.1	15	0.1	25	0.1
Asian or Asian British: Indian	0	0.0	8	0.1	8	0.1	1	0.0	15	0.1	16	0.1	24	0.1
Asian or Asian British: Pakistani	0	0.0	10	0.1	10	0.1	0	0.0	11	0.1	11	0.1	21	0.1
Mixed: White And Black Caribbean	0	0.0	6	0.1	6	0.0	1	0.0	8	0.1	9	0.1	15	0.1
Black or Black British: African	0	0.0	2	0.0	2	0.0	0	0.0	10	0.1	10	0.1	12	0.0
Mixed: White And Black African	0	0.0	3	0.0	3	0.0	0	0.0	9	0.1	9	0.1	12	0.0
Black or Black British: Caribbean	0	0.0	5	0.0	5	0.0	0	0.0	5	0.0	5	0.0	10	0.0
Asian or Asian British: Any Other Asian Background	0	0.0	1	0.0	1	0.0	0	0.0	8	0.1	8	0.1	9	0.0
Chinese or Chinese British	1	0.0	3	0.0	4	0.0	0	0.0	5	0.0	5	0.0	9	0.0
Asian or Asian British: Bangladeshi	0	0.0	3	0.0	3	0.0	1	0.0	3	0.0	4	0.0	7	0.0
Black or Black British: Any Other Black Background	0	0.0	1	0.0	1	0.0	0	0.0	5	0.0	5	0.0	6	0.0
Unknown	352	11.6	1428	13.3	1780	13.0	364	12.7	1519	15.1	1883	14.6	3663	13.8
Total	3026	100	10700	100	13726	100	2857	100	10047	100	12904	100	26630	100

6. Number of registered teachers by school type and teacher training establishment (ITT)

	Primary						Secondary						Total	%
	Welsh Medium	%	English Medium	%	Primary Total	%	Welsh Medium	%	English Medium	%	Secondary Total	%		
Aberystwyth University	193	6.4	222	2.1	415	3.0	477	16.7	414	4.1	891	6.9	1,306	4.9
Bangor University	632	20.9	649	6.1	1,281	9.3	627	21.9	518	5.2	1,145	8.9	2,426	9.1
Cardiff Metropolitan	429	14.2	1,709	16.0	2,138	15.6	362	12.7	1,963	19.5	2,325	18.0	4,463	16.8
Glyndwr	121	4.0	528	4.9	649	4.7	12	0.4	49	0.5	61	0.5	710	2.7
Newport University	34	1.1	1,122	10.5	1,156	8.4	37	1.3	370	3.7	407	3.2	1,563	5.9
Swansea Metropolitan University	114	3.8	1,308	12.2	1,422	10.4	294	10.3	1,969	19.6	2,263	17.5	3,685	13.8
Trinity Saint David Carmarthen	687	22.7	982	9.2	1,669	12.2	83	2.9	239	2.4	322	2.5	1,991	7.5
University Of Wales (Institution not recorded)	260	8.6	949	8.9	1,209	8.8	64	2.2	248	2.5	312	2.4	1,521	5.7
Institution in England	32	1.1	1,375	12.9	1,407	10.3	191	6.7	1,830	18.2	2,021	15.7	3,428	12.9
Institution Unknown or UK	524	17.3	1,856	17.3	2,380	17.3	710	24.9	2,447	24.4	3,157	24.5	5,537	20.8
Total	3,026	100	10,700	100	13,726	100	2,857	100	10,047	100	12,904	100	26,630	100

7. Number of registered teachers by school type and subject trained v subject taught in Secondary only

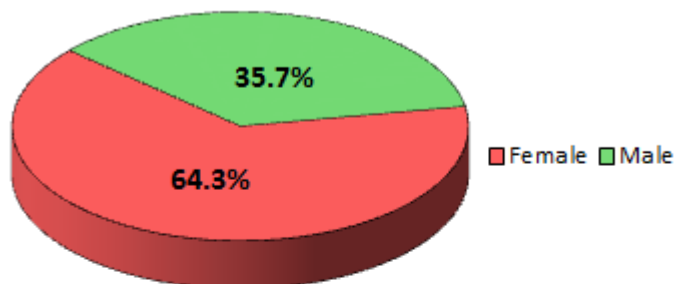
	Welsh Medium School								English Medium School								Total
	Trained in Subject	%	Not trained in Subject	%	Subject Trained Unknown	%	Total	%	Trained in Subject	%	Not trained in Subject	%	Subject Trained Unknown	%	Total	%	
Art	78	70.3	28	25.2	5	4.5	111	100	331	72.1	110	24.0	18	3.9	459	100	570
Accounting	0	0.0	0	0.0	0	0.0	0	100	0	0.0	1	100.0	0	0.0	1	100	1
Biology	81	64.3	40	31.7	5	4.0	126	100	181	53.6	146	43.2	11	3.3	338	100	464
Business Studies	15	25.4	36	61.0	8	13.6	59	100	170	62.0	89	32.5	15	5.5	274	100	333
Careers	0	0.0	9	100.0	0	0.0	9	100	2	7.1	25	89.3	1	3.6	28	100	37
Chemistry	76	67.3	33	29.2	4	3.5	113	100	162	47.6	161	47.4	17	5.0	340	100	453
Child Development	1	8.3	10	83.3	1	8.3	12	100	4	8.0	40	80.0	6	12.0	50	100	62
Design & Technology	144	66.4	63	29.0	10	4.6	217	100	525	68.4	216	28.2	26	3.4	767	100	984
Drama	41	46.6	39	44.3	8	9.1	88	100	153	49.0	134	42.9	25	8.0	312	100	400
Economics	3	25.0	8	66.7	1	8.3	12	100	11	27.5	27	67.5	2	5.0	40	100	52
Electronics	1	11.1	8	88.9	0	0.0	9	100	0	0.0	10	90.9	1	9.1	11	100	20
Engineering	0	0.0	1	100.0	0	0.0	1	100	7	63.6	1	9.1	3	27.3	11	100	12
English	190	59.7	117	36.8	11	3.5	318	100	878	65.7	382	28.6	77	5.8	1,337	100	1,655
General Studies	1	33.3	2	66.7	0	0.0	3	100	4	21.1	13	68.4	2	10.5	19	100	22
Geography	106	71.1	42	28.2	1	0.7	149	100	360	66.4	166	30.6	16	3.0	542	100	691
Government & Politics	0	0.0	4	100.0	0	0.0	4	100	0	0.0	10	90.9	1	9.1	11	100	15
History	105	61.0	65	37.8	2	1.2	172	100	425	67.8	189	30.1	13	2.1	627	100	799
Home Economics	15	30.6	33	67.3	1	2.0	49	100	54	31.0	118	67.8	2	1.1	174	100	223
Humanities	0	0.0	12	100.0	0	0.0	12	100	13	32.5	25	62.5	2	5.0	40	100	52
Information Technology	49	34.8	76	53.9	16	11.3	141	100	311	50.1	271	43.6	39	6.3	621	100	762
Law	0	0.0	2	66.7	1	33.3	3	100	4	25.0	8	50.0	4	25.0	16	100	19
Mathematics	222	63.2	111	31.6	18	5.1	351	100	865	70.7	302	24.7	57	4.7	1,224	100	1,575
Media Studies	12	60.0	6	30.0	2	10.0	20	100	85	57.4	49	33.1	14	9.5	148	100	168
Modern Foreign Languages	143	78.1	36	19.7	4	2.2	183	100	455	75.0	113	18.6	39	6.4	607	100	790
Music	70	65.4	34	31.8	3	2.8	107	100	267	74.6	69	19.3	22	6.1	358	100	465
Personal, Health & Social Education	13	31.0	28	66.7	1	2.4	42	100	34	21.1	105	65.2	22	13.7	161	100	203
Physical Education	162	66.9	72	29.8	8	3.3	242	100	664	74.9	184	20.8	38	4.3	886	100	1,128
Physics	62	52.5	48	40.7	8	6.8	118	100	139	46.5	139	46.5	21	7.0	299	100	417
Psychology	4	18.2	14	63.6	4	18.2	22	100	12	16.9	44	62.0	15	21.1	71	100	93
Religious Education	84	65.1	43	33.3	2	1.6	129	100	325	61.3	177	33.4	28	5.3	530	100	659
Science	104	39.8	145	55.6	12	4.6	261	100	394	40.0	533	54.2	57	5.8	984	100	1,245
Sociology	3	21.4	8	57.1	3	21.4	14	100	26	32.5	36	45.0	18	22.5	80	100	94
Special Educational Needs	5	6.4	69	88.5	4	5.1	78	100	29	10.3	230	81.9	22	7.8	281	100	359
Travel & Tourism	5	50.0	4	40.0	1	10.0	10	100	13	36.1	20	55.6	3	8.3	36	100	46
Welsh	248	65.8	122	32.4	7	1.9	377	100	438	67.1	195	29.9	20	3.1	653	100	1,030
Welsh Baccalaureate	2	40.0	3	60.0	0	0.0	5	100	12	60.0	6	30.0	2	10.0	20	100	25
Total	2,045	57.3	1,371	38.4	151	4.2	3,567	100	7,353	59.5	4,344	35.2	659	5.3	12,356	100	15,923

Included in these figures :-
 10,089 teachers have 1 subject recorded, 2,038 teachers have 2 subjects, 511 teachers have 3 subjects, 45 teachers have 4 subjects, 5 teachers have 5 subjects, 1 teacher has 6 subjects and 2 teachers have 7 subjects

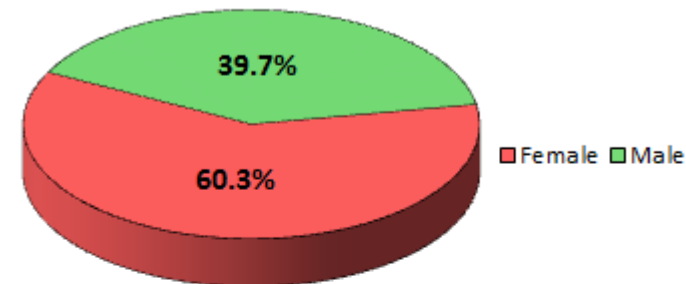
8. Number of registered headteachers by gender and phase working

	Primary						Secondary						Total	%
	Welsh Medium	%	English Medium	%	Primary Total	%	Welsh Medium	%	English Medium	%	Secondary Total	%		
Female	245	64.3	562	60.3	807	61.5	14	25.9	49	30.8	63	29.6	870	57.0
Male	136	35.7	370	39.7	506	38.5	40	74.1	110	69.2	150	70.4	656	43.0
Total	381	100	932	100	1313	100	54	100	159	100	213	100	1526	100

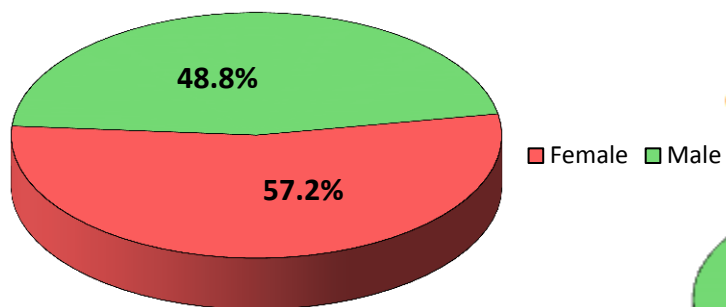
Gender Primary Welsh Medium



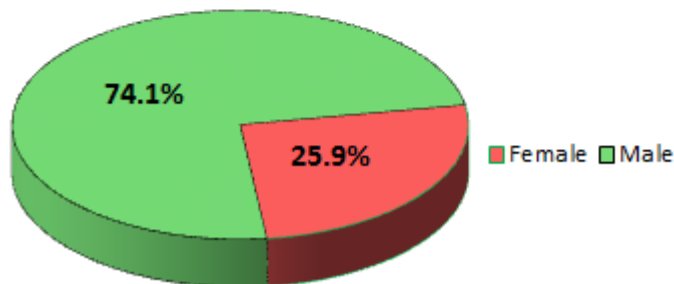
Gender Primary English Medium



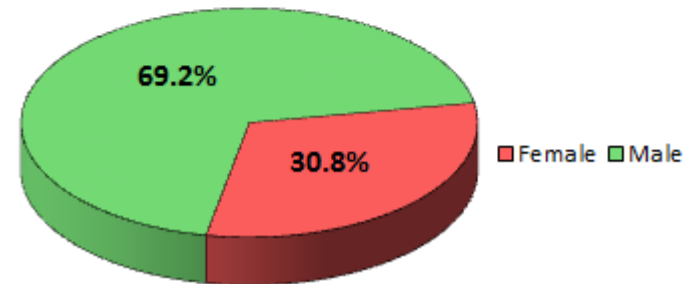
Gender Breakdown within Headteachers as per Digest 2013



Gender Secondary Welsh Medium



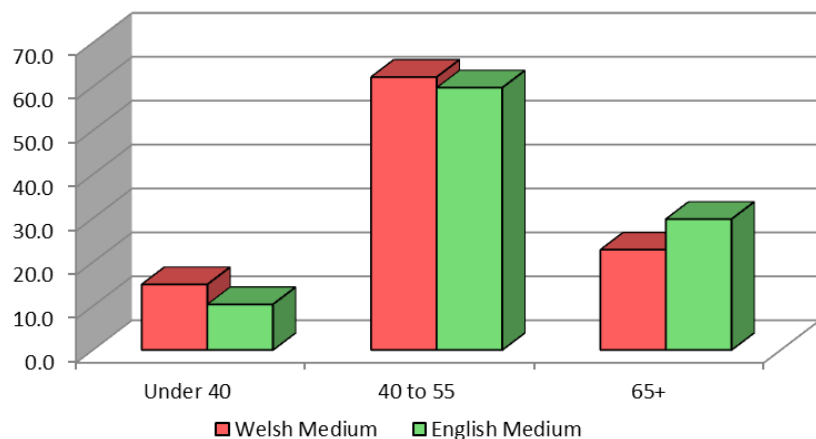
Gender Secondary English Medium



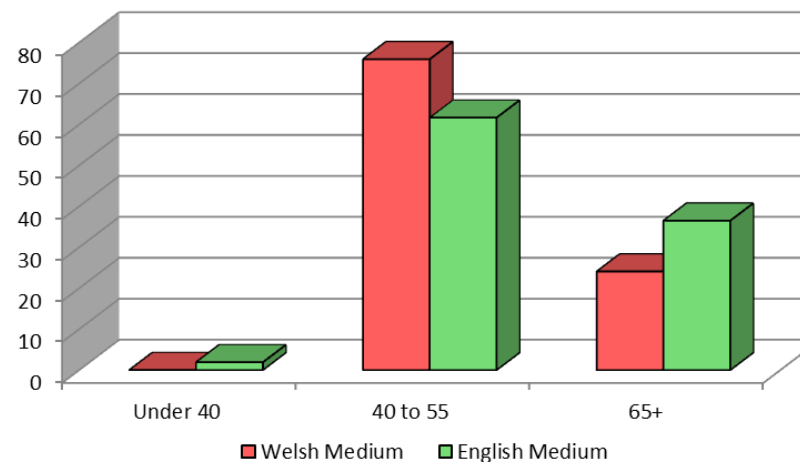
9. Number of registered headteachers by age and phase working

	Primary						Secondary						Total	%
	Welsh Medium	%	English Medium	%	Primary Total	%	Welsh Medium	%	English Medium	%	Secondary Total	%		
30 to 34	19	5.0	17	1.8	36	2.7	0	0.0	1	0.6	1	0.5	37	2.4
35 to 39	38	10.0	80	8.6	118	9.0	0	0.0	2	1.3	2	0.9	120	7.9
Under 40	57	15.0	97	10.4	154	11.7	0	0.0	3	1.9	3	1.4	157	10.3
40 to 44	90	23.6	165	17.7	255	19.4	7	13.0	17	10.7	24	11.3	279	18.3
45 to 49	84	22.0	225	24.1	309	23.5	15	27.8	35	22.0	50	23.5	359	23.5
50 to 54	63	16.5	167	17.9	230	17.5	19	35.2	46	28.9	65	30.5	295	19.3
40 to 55	237	62.2	557	59.8	794	60.5	41	75.9	98	61.6	139	65.3	933	61.1
55 to 59	69	18.1	216	23.2	285	21.7	12	22.2	56	35.2	68	31.9	353	23.1
60 to 64	17	4.5	56	6.0	73	5.6	1	1.9	2	1.3	3	1.4	76	5.0
65 +	1	0.3	6	0.6	7	0.5	0	0.0	0	0.0	0	0.0	7	0.5
65+	87	22.8	278	29.8	365	27.8	13	24.1	58	36.5	71	33.3	436	28.6
Total	381	177	932	170	1313	172	54	176	159	164	213	167	1526	171

Age Profile of Headteacher Primary



Age Profile of Headteacher Secondary



10. Number of registered teachers with NPQH by employment description and school type

Primary Sector

	Welsh Medium Schools					English Medium School					Total
	Yes	%	No	%	Total	Yes	%	No	%	Total	
Head teacher	160	42.0	221	58.0	381	548	58.8	384	41.2	932	1313
Deputy head	39	20.7	149	79.3	188	233	29.2	564	70.8	797	985
Assistant head teacher	4	10.8	33	89.2	37	18	16.7	90	83.3	108	145
Other*	18	0.7	2402	99.3	2420	71	0.8	8792	99.2	8863	11283
Total	221	7.3	2805	92.7	3026	870	8.1	9830	91.9	10700	13726

Secondary Sector

	Welsh Medium Schools					English Medium School					Total
	Yes	%	No	%	Total	Yes	%	No	%	Total	
Head teacher	33	61.1	21	38.9	54	114	71.7	45	28.3	159	213
Deputy head	31	52.5	28	47.5	59	112	58.0	81	42.0	193	252
Assistant head teacher	19	22.6	65	77.4	84	70	21.7	253	78.3	323	407
Other	15	0.6	2645	99.4	2660	55	0.6	9317	99.4	9372	12032
Total	98	3.4	2759	96.6	2857	351	3.5	9696	96.5	10047	12904

*Other - Includes Head of Department, Head of Year, On Maternity, Senior Teacher and Teacher